



Field Mountable RJ45 (FM45)

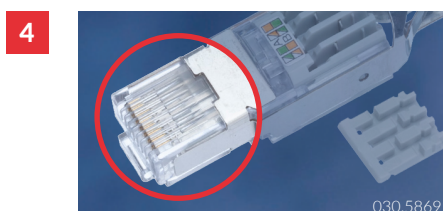
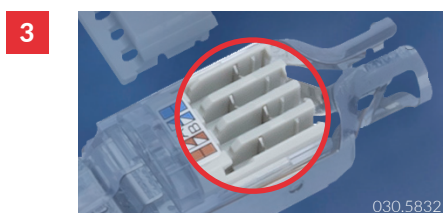
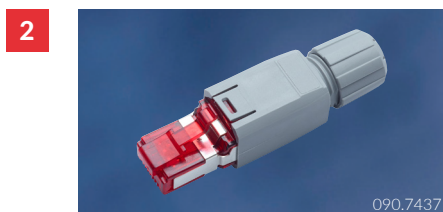
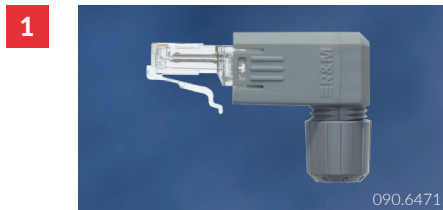
Reliable termination since 2003.

Our range of FM45s has proved itself for over a decade. The FM45 sets usability standards, simplifies cabling on the spot and is available in different versions. Another convincing cabling solution made by R&M. Made for the field.

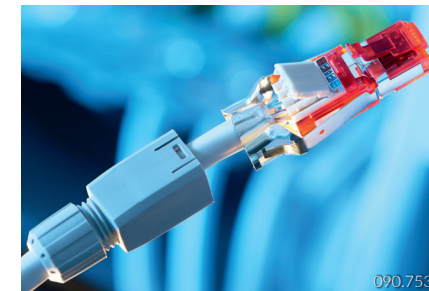
FM45.

Key features and advantages.

Unplanned network enhancements, limited space, point to point connections and provisional installations are common needs for a quick on-site cable termination. The FM45 is suitable for every need indoors and outdoors.

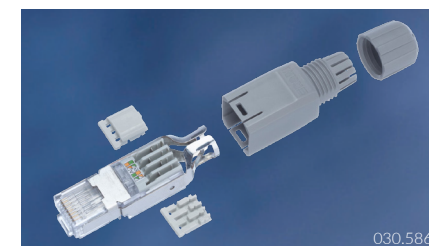


- 1 Flexible**
You can mount it in every corner and even around the corner!
- 2 10GB/s ETH**
Maximum Ethernet speed for shielded and unshielded cable versions for every need!
- 3 IDC**
All FM45s are equipped with stable re-terminable IDCs for secure connection and enhanced PoE capability – for a lifetime!
- 4 Power over Ethernet**
Full PPoE support with all types of FM45. Meets all power classes - PowerSafe!
- 5 IP20 or IP67**
Indoor or outdoor use, thick or thin cable. Versatility is yours!



Reliable field termination for over a decade.

Not only do we have a solution for all needs but also a long-established reputation in the field. Made for field applications. Constant small improvements and portfolio enhancements provide you with exactly the right RJ45 field plug.



Indoor

Our base versions are all IP20 and come with a nice, slim housing with integrated strain relief. No special tool is required and connection is done in a flash.



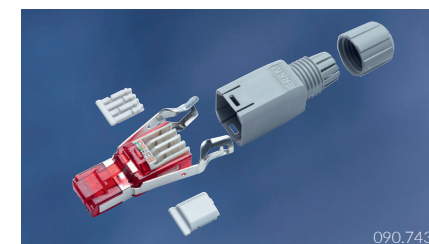
Outdoor

Rain, dust, sun, snow or damp – they are all possible with our IP67 version and an appropriate cable. No element influences your connection. Also available: a mounting frame with a protective cap.



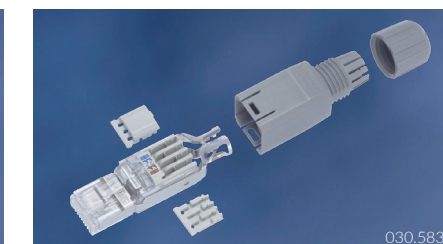
PowerSafe

All FM45s feature IDCs for durable, long-lasting and firm contact between your device and the termination cable because connectivity matters! Thanks to this, PoE applications stay cool!



Cat. 6_A

Cat. 6_A is available in shielded/unshielded combined and unshielded with angled housing. It connects AWG22-26, solid or stranded wire. High quality PCB technology and reserve to limit - a real Cat. 6_A plug.



Cat. 5e

Cat. 5e is available in shielded/unshielded combined and unshielded with angled housing. It connects AWG22-26, solid or stranded wire. Non PCB design for higher mechanical stress resistance.



Angled in 4 positions

Our angled version allows for space-saving installation. The housing has the same comfortable screw-nut built-in strain relief as the straight housing. The housing can be mounted in four different positions (every 90°) for maximum versatility.

FM45.

Your most important benefits.

✓ **Tailor-made products for your application**

- Straight C5e or C6_A version for shielded or unshielded cables in one single design
- Angled C5e or C6_A unshielded version for more installation flexibility

✓ **One solution fits all**

- *PowerSafe* and in line with all current PoE levels
- Indoor and outdoor solution
- Covers all common cable constructions

✓ **Mechanically superior**

- Compact and lightweight
- Robust
- Easy handling

Complementary products



Outlets

Various shapes and types to suit your needs



Housings

Housings and sleeves available in various versions for more applications



Industry Cable

Enhanced cables for secure connectivity in industrial environments



Security System

To lock, mark and secure your connection, optically or mechanically



We are represented by more than 100 qualified partners worldwide. Find your local partner at: www.rdm.com

