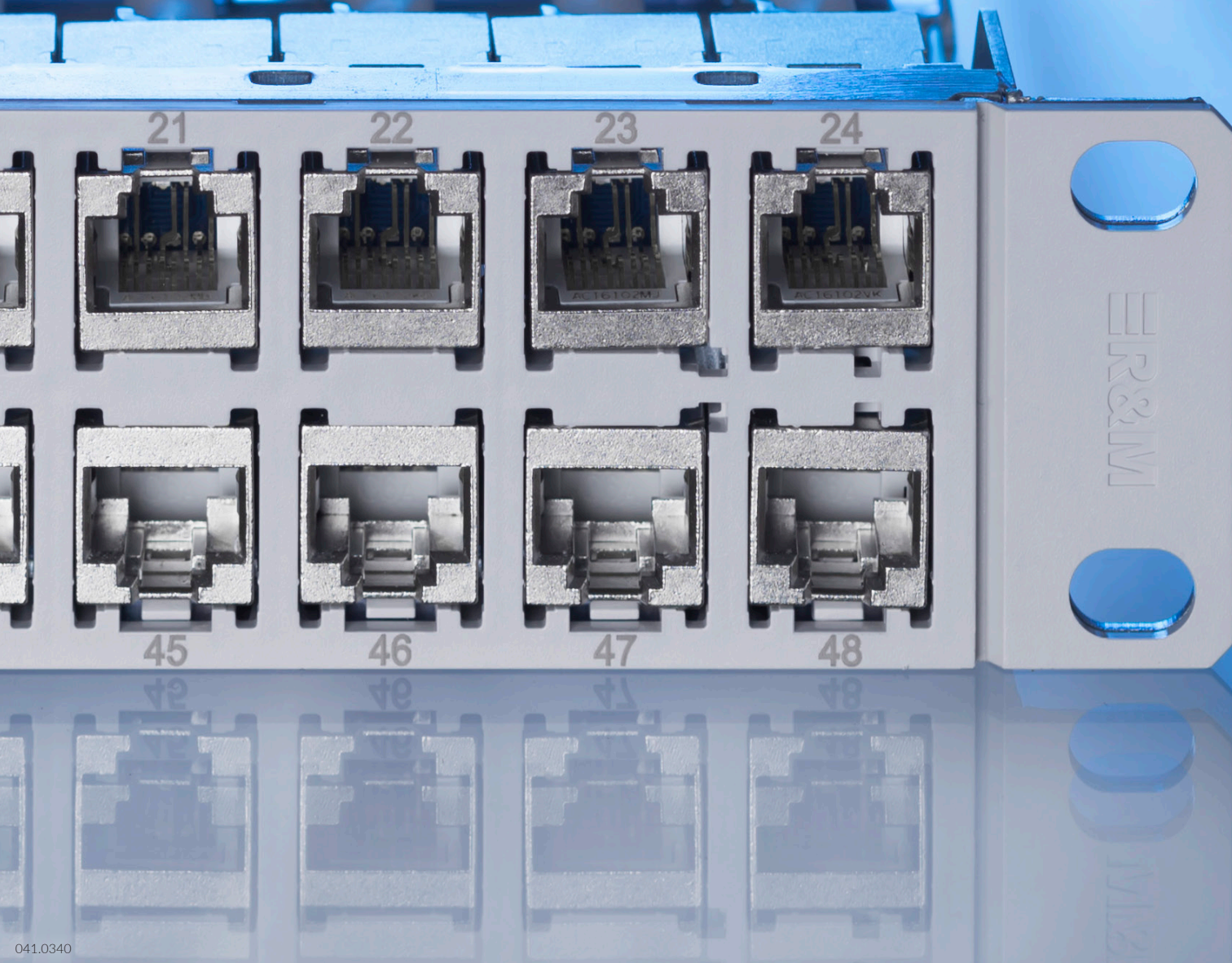


Patch Panel HD ELISO 48 Port



041.0340

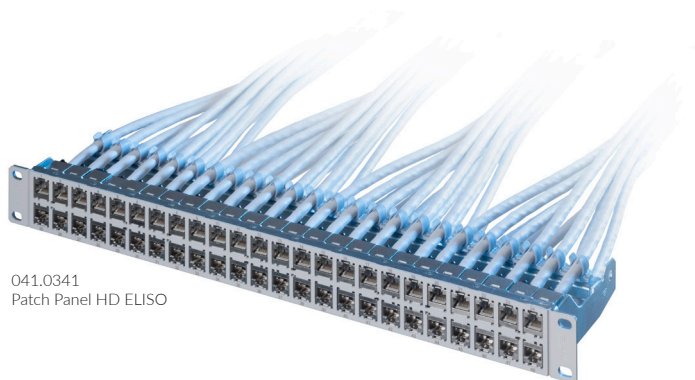
Patch Panel HD ELISO 48 Port

In today's densely populated world, space is crucial in every aspect. R&M constantly strives to help customers with products and solutions which address those circumstances. Our focus was on a very economic, lightweight yet stable copper patch panel that uses as little space as possible. Not only data center will benefit from gaining space but also an office cabling environment.

The R&M HD ELISO patch panel will hold up to 48 Cat. 6A EL, Cat. 6A or FO adapters. Our hybrid construction allows for outstanding handling properties in an extremely stable frame. Get to know the features in more detail on the following pages.

Slim Hybrid Construction

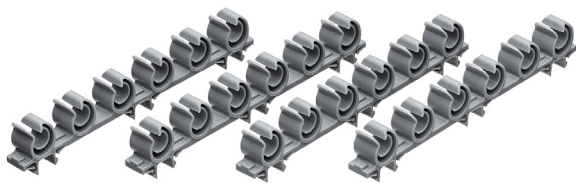
A brand-new hybrid construction allows for stability and durability yet it is a lightweight design. The plastic front inlay acts as a module holder with front release system and offers the option to have it coloured in either grey or black. This easy to use front release mechanism greatly enhances handling comfort in all use cases using a common screwdriver. Port markings in durable print help identify the ports. Due to the sturdy full metal base the panel is conductive and allows for several earthing concept methods. It will smoothly integrate in existing environments while increasing the port capacity per height unit.



041.0341
Patch Panel HD ELISO

Re-usable Cable Guides

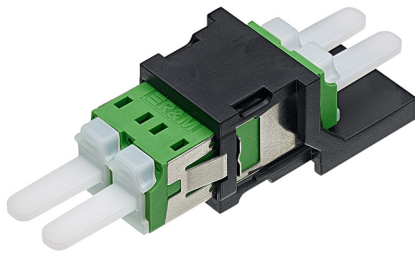
An innovative way of a re-usable cable guide is available as an option to be mounted on your integrated strain relieve bar. This allows for greater flexibility if it comes to cable layout in your rack or simply to maintain it faster. The cable guide hugely improves cable handling mover, add and changes in tightly populated racks. This might be crucial in DC environments using pre-assembled trunk cables. The only provision is to have your cables strain-relieved in the rack.



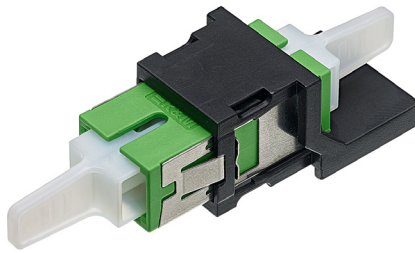
090.7877
Patch Panel HD ELISO cable guide

FO-capability

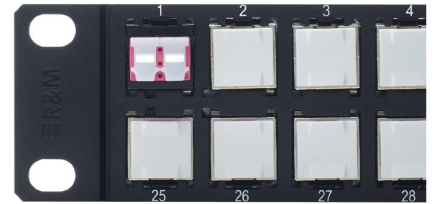
Sometimes it might be beneficial to have options for fibre optics and RJ45 in the same patch panel. A special FO adapter available is the solution. It simply clicks into the same fixation points as the copper modules and holds LC duplex and SC simplex adapters. In this way, the panel can also be used for the occasional pre-assembled or field terminable fibres. This saves investments in separate panels and space.



090.7864
Adapter frame special LC



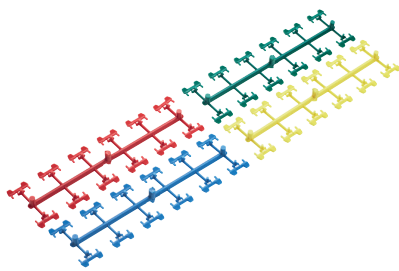
090.7867
Adapter frame special SC



090.7879
HD ELISO patch panel

Labelling, Marking and Security

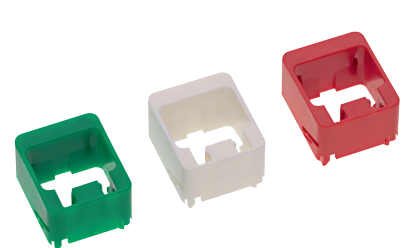
Labels keep you informed and help to keep the overview during operation. Optional label holders can be attached for this purpose. Moreover, intelligent mini holes provide access for a number of colour marking items or safety plug frames to prevent unwanted unplugging. These latter options might be especially helpful in meet me rooms or public buildings where several people have access to the infrastructure. They help to reduce human operation errors and therefore improve network downtime.



090.7072
PC Coding clip



090.6147
HD Hinged dust cover

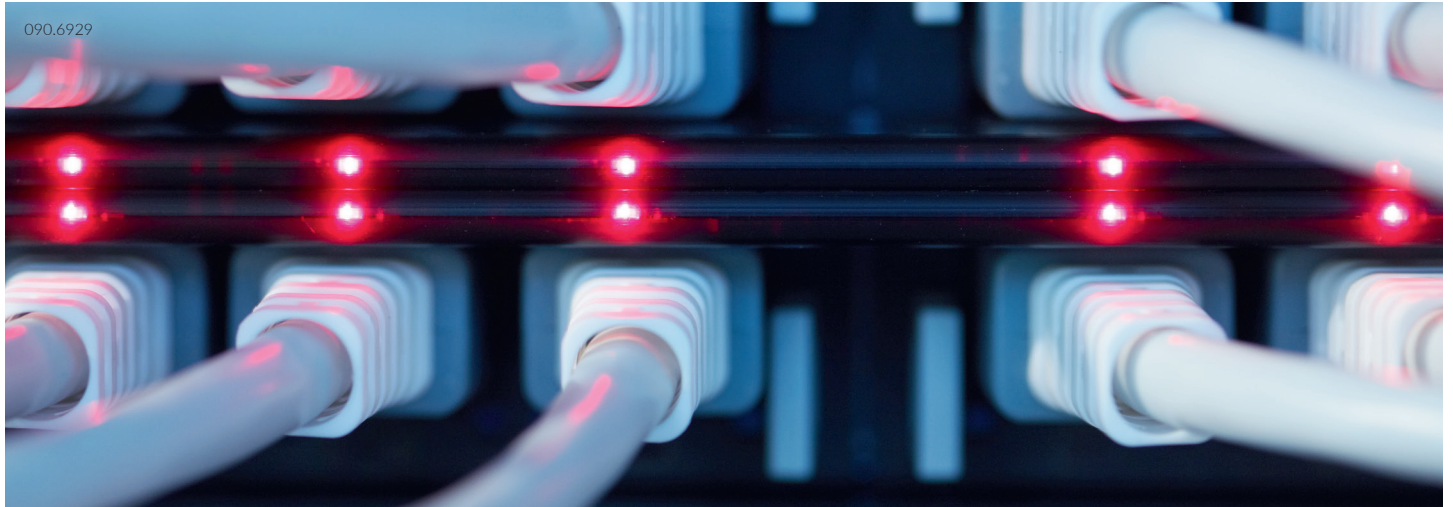


090.6148
HD Plug guard



090.6141
Label Holder HD

Patch Panel HD ELISO 48 Port



R&MinteliPhy and other accessories

Additional accessories include blind covers and our electronic infrastructure management system the R&MinteliPhy. The R&MinteliPhy sensor bar can easily be attached on every panel even during operation. For more information on our electronic infrastructure management system please visit our website.



090.7890
Blind cover global, white



090.7891
Blind cover global, black



090.6917
R&MinteliPhy Bar